



Bar Code Replication System

On-Demand ISBT 128 Printing Meets The Challenge

- Avoid running out of DIN labels in your manufacturing process



RepliTrax™ - DIN

- Significantly reduce DIN labeling inventory

- Supply your hospital customers with enough DINs

Replicate ISBT 128 Bar Codes Easily & Economically

No software or PC required

Eliminate Writing Mistakes, Manual Transposition, Expensive Inventory, & Lower Costs by 40%



Bar Code Replication System Overview

Try RepliTrax™-DIN System with our FREE 30 day, no risk trial!

For details, visit:
www.digi-trax.com/replitrax.htm

Buy or print just enough DIN labels for each donation. With a single, economical, bar code replication system (RepliTrax™-DIN) print what you need, when you need it. Attach RepliTrax™-DIN labels to blood units only when released from inventory. Like every Digi-Trax® product, all RepliTrax-DIN components are fully supported.

What is the RepliTrax-DIN System?

RepliTrax-DIN System is comprised of a 300 dpi Zebra G-Series desktop thermal transfer printer with Digi-Trax DIN firmware installed, a Honeywell scanner, and cables to connect to the printer. No computer is required. The firmware is designed to replicate and print compliant ISBT-128 DIN bar code labels for blood bags (medium density) and test tubes (high density). RepliTrax-DIN combines the “best-of-class” scanning & print technology with reliable Digi-Trax embedded firmware.

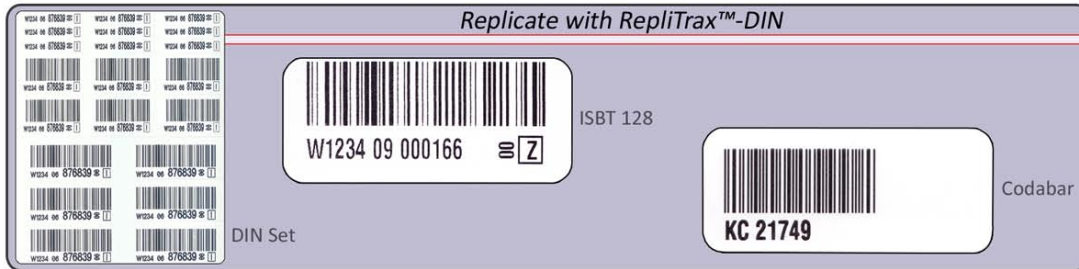


Zebra GX430t Thermal Transfer Printer

Reliable and time tested, Digi-Trax® label supplies have been used by hundreds of blood centers for over 20 years. These carefully matched supplies provide maximum durability, meeting the rigorous requirements found in blood banking, cellular therapy and tissue banking. Digi-Trax labels stick and remain legible when exposed to freezing, waterbath, repeated abrasion and disinfecting. Our adhesives meet CFR 21, Sec. 175.105 and have been tested for bag leaching.



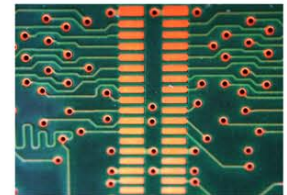
Honeywell 4600g Scanner



Ask your sales representative how you can save 40% on DIN Set Printing!

Consumables (stock sizes):

- A. Part # **ISBT-128-G** Piggyback ISBT 128 DIN Set: 3.74" x 4.5", 250/roll), 6 bag labels, 6 tube labels, 9 pig-tails); 6 rolls (1500 labels) & 3 rolls ribbon **RR-CT-G4**, purchase by the case.
- B. Part # **DIN-1875-G** Single Ply DIN labels 1.875" x .75", 1000 per roll, purchase by the roll.
- C. Part# **DIN-125-G** Single Ply DIN labels 1.25" x .75", 1000 per roll, purchase by the roll.
- D. Ribbon # **RR-CT-G2**, 2.5" x 243' able to print 3 rolls of either **DIN-1875-G** or **DIN-125-G**



Custom Digi-Trax DIN firmware is preinstalled in the Zebra G Series Printer



Ribbon & DIN Label Media