



Bar Code Replication System



Replicate Lab Bar Codes Easily & Economically

No software or PC required

*Eliminate Writing Mistakes & Manual Transposition Errors.
RepliTrax Your Log!*



Bar Code Replication System

Overview

RepliTrax™ is a complete, stand-alone, bar code replicating system. It is capable of replicating 1-D ISBT-128 and Codabar Unit ID labels and DIN sets. It also replicates 2-D Data Matrix and Aztec bar codes. No PC or software installation is required.

The system consists of three parts:

- Barcode scanner (Honeywell 4600G 1-D, 2-D Imager)
- Label printer (Zebra GX430t)
- Digi-Trax custom RepliTrax firmware preloaded into the printer

Honeywell 4600G Scanner

The Honeywell 4600G Imager has been pre-programmed to detect 1-D, ISBT-128, Codabar, Code 128, Code 39; 2-D Aztec, and Data Matrix bar codes. This model is made to connect to, and is powered by, a 9-pin Serial Port. For your convenience, the 9-Pin Gender Adapter and Data Cable has been attached to the scanner.

Zebra GX430t Label Printer

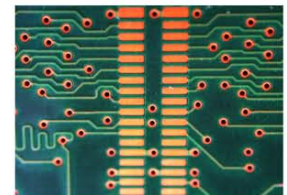
The Zebra GX430t printer for RepliTrax has been designed with flexibility in mind. It can be used with other HemaTrax® blood bank or cellular therapy labeling software from Digi-Trax®. The Zebra GX430t printer prints at 300 DPI, and can be configured to print ISBT Labels using Digi-Trax's HemaTrax software.

Digi-Trax Custom Firmware Suite for RepliTrax

Our programmed firmware has been preloaded into the printer's read only memory. This firmware package allows the printer to print ISBT-128, Codabar, Code 128, Code 39, Aztec, and DataMatrix labels. It allows the Zebra® printer to be compatible to other products offered by Digi-Trax®, including HemaTrax® Standalone, HemaTrax Print Service (TCP/IP), & HemaTrax-CT for cellular therapy.

Supplies & Consumables (stock sizes):

- Part # **ISBT-128-G** Piggyback ISBT 128 DIN Set: 3.74" x 4.5", 250/roll), 6 bag labels, 6 tube labels, 9 pig-tails); 6 rolls (1500 labels) & 3 rolls ribbon **RR-CT-G4**, purchase by the case.
- Part # **DIN-1875-G** Single Ply DIN labels 1.875" x .75", 1000 per roll, purchase by the roll.
- Part# **DIN-125-G** Single Ply DIN labels 1.25" x .75", 1000 per roll, purchase by the roll.
- Ribbon # **RR-CT-G2**, 2.5" x 243' able to print 3 rolls of either **DIN-1875-G** or **DIN-125-G**





Bar Code Replication System

Setup



RepliTrax Equipment List: (Note: all operator controls are keyed "green")

Remove the printer, power supply, cables, and scanner from box and packing material. You should have the following:

- 1) Zebra GX430t Printer
- 2) AC Power Adapter & Cord
- 3) Honeywell 4600G Scanner attached to the Data Cable & Gender Adapter
- 4) Roll of durable synthetic labels; roll of thermal transfer ribbon & ribbon take-up core

Installing the Thermal Transfer Ribbon

Using the green finger latches on either side, open the printer until the Print Head Chassis is pointed upwards. Insert the Thermal Transfer Ribbon in the bottom section of the Print Head Chassis so the resin ink side faces outwards (non shiny). If you are unsure which side of the ribbon contains the resin, use a discarded label to contact the ribbon to see which side leaves black resin on the adhesive surface of the label. See image at right.

(ribbon installation continued on next page)



The ink side should be face up and will leave black marks on a scrap label.



Bar Code Replication System

Setup

Installing the Thermal Transfer Ribbon (continued)

Before inserting the Ribbon Take Up Roll into the printer, wrap a small amount of ribbon around the core, so that the ribbon is winding away from you. Next, insert the Ribbon Take Up Core in the top section of the Print Head Chassis. Use the green wheel, located on the left side, to wind the core until the ribbon is taut.

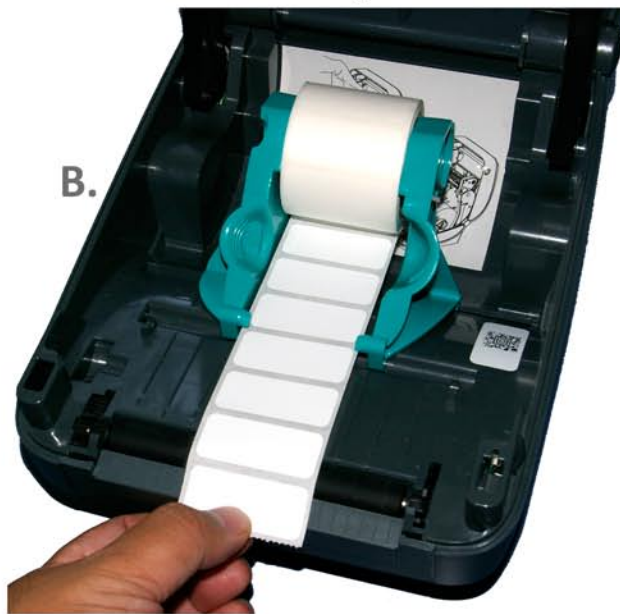
(See figure A at right)

A.



Installing the Label Roll

Place the Label Roll in between the far end of the two green brackets.



Use the green wheel at the center bottom to adjust the distance between the brackets. The label roll should be able to move freely, with the label coming out towards the front of the printer, underneath the guides on the front end of the brackets. (See figure B above)

Using Fan-Fold Labels

If fan-folded labels are used, they should be stacked and fed from behind the printer, and not stored in it. There is a slot in the back, which allows labels to enter the printer.

(See figure C at right)

C.





Bar Code Replication System

Operation

Connect the Scanner Data Cable to the Printer

Locate the 9-pin Female Serial Port on the back of the printer. Connect the scanner's data cable to the printer port. Use the thumb screws to secure the cable to the back of the printer. Turn the screws until the fit is snug. Be sure not to over-tighten and damage the screws.

At this time the AC Adapter can be plugged into the printer and into an electrical source and powered on. You will hear a three beep tone from the scanner. The RepliTrax system is now ready to print labels.



Printer / Label Calibration

On power up and print head close, the printer will cycle through a couple of labels as it runs through the calibration process. Once completed, the printer is ready to print (you should have a solid green LED). You may need to press the "Feed" button on the top of the printer, if the LED light is blinking green. You may also try turning the printer off and on, if the calibration still does not appear to be correct.

Creating Replicant Labels & Printer Settings

To create a replicant label, point the scanner at the desired bar code, and pull the trigger of the scanner until you hear an audible beep. The printer will automatically print the label. There are four (4) printer settings which can be activated by scanning the bar codes, attached to the face of the printer. These settings include High Density, Medium Density, DIN Set, and SINGLE DIN (ISBT 128 or Codabar).

HIGH / MEDIUM Density Bar Codes

Two of the bar codes on the printer toggle the printer's ability to print high density (more compact; "x" dimension or narrowest bar of 7mils or less) and medium density (less compact) bar codes. The printer is defaulted to medium density. To activate high density, scan the bar code until you hear the scanner beep once. To revert back to medium density, scan the medium density bar code.

Creating Single DIN labels/ Piggyback DIN sets

DIN Sets were designed to print on the 4" x 4½" fan fold or rolled piggyback labels. The printer is defaulted to Single DIN upon power on. Replace the single labels with DIN Sets & close the lid. Scan the bar code that is labeled "DIN Set." The scanner will beep once. The printer is now ready to print DIN Sets by scanning the desired DIN bar code. To return to printing single DIN labels, scan the SINGLE DIN bar code until you hear the scanner beep once. Remember to change the roll of labels.



Bar Code Replication System

Support

RepliTrax Support

If you have any questions or problems regarding the RepliTrax label replication system, please feel free to contact Digi-Trax at 800-356-6126 or visit our support website at www.digi-trax.com/support

RepliTrax Label Samples:

(enlarged to show detail)



Code 39



Code 128



ISBT 128



Aztec



Codabar



Data Matrix



DIN Set