

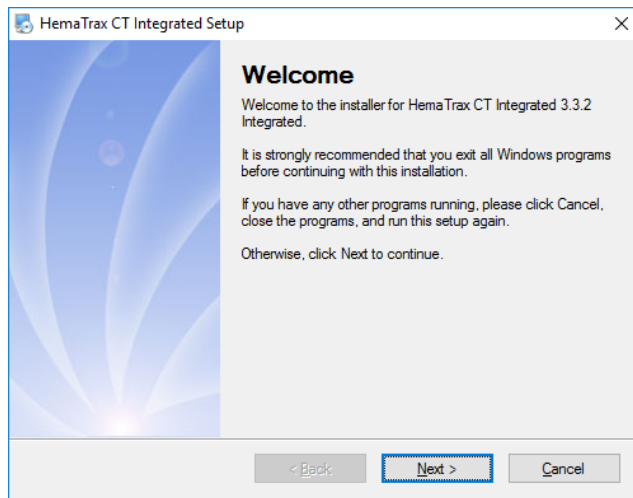
Installing HemaTrax CT Integrated Software

Install Printer Driver(s)

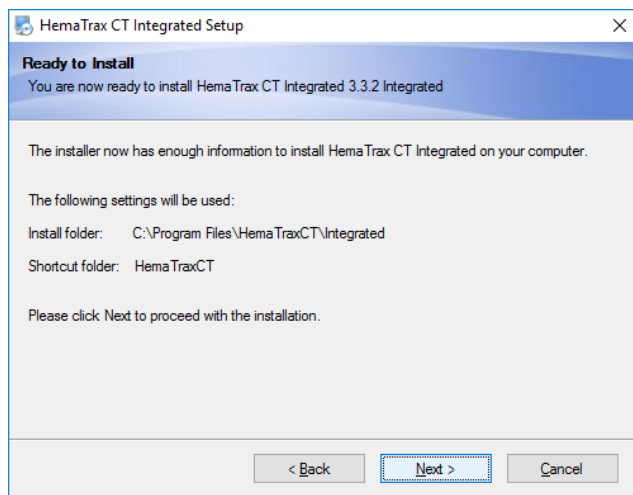
Follow the manufacturer's recommended installation instructions for the drivers. They can either be found on the Zebra CD included with the printer or downloaded from www.zebra.com

Installing HemaTrax CT and NiceWatch Client

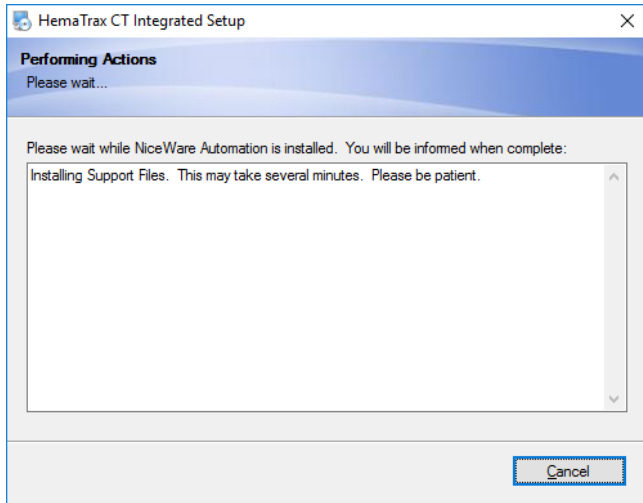
Insert the CD or run the installation file to begin the installation process.



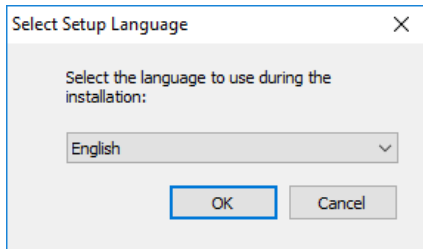
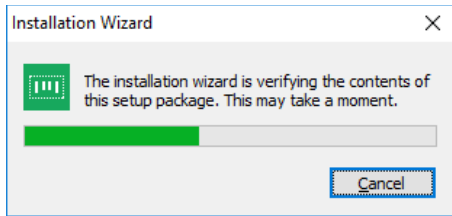
Select Next.



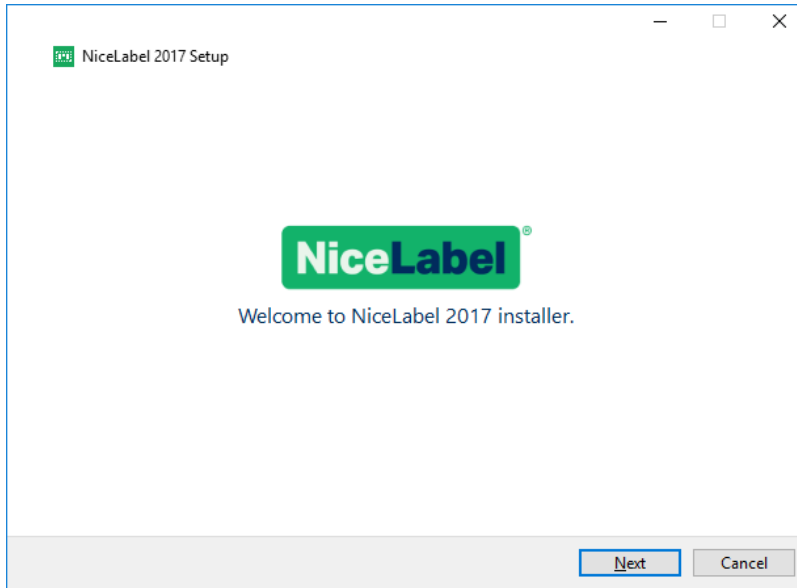
Select Next.



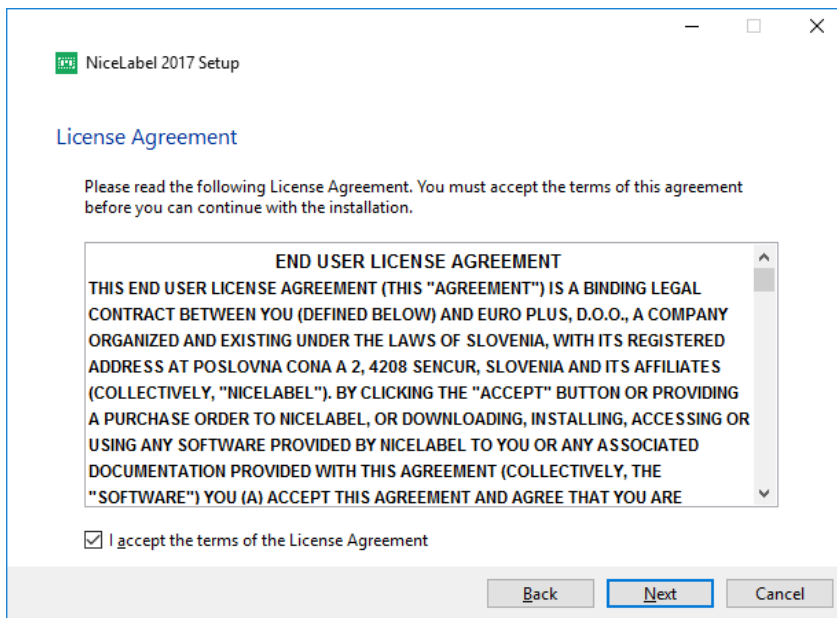
The installer will now begin to install the NiceWare Automation package that manages the data.



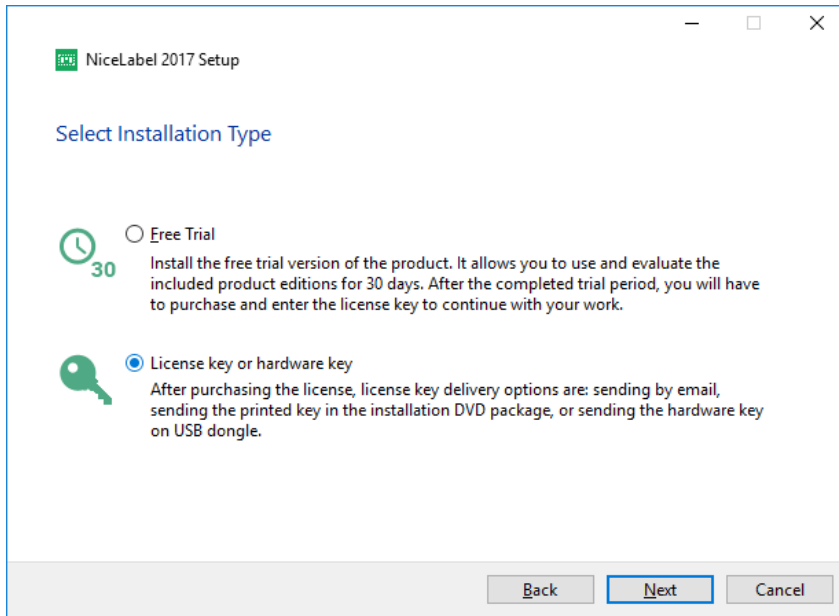
Choose English.



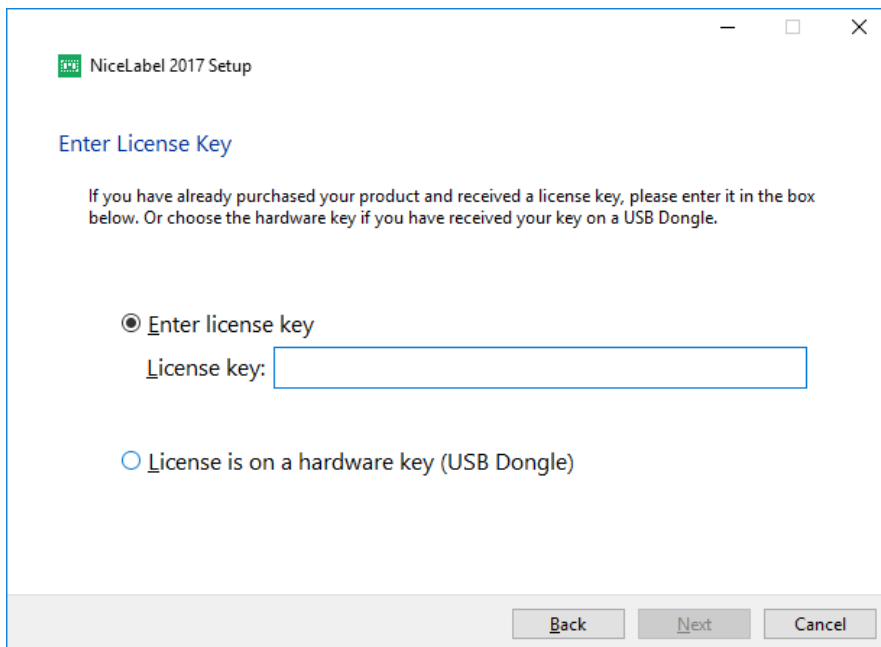
Select Next.



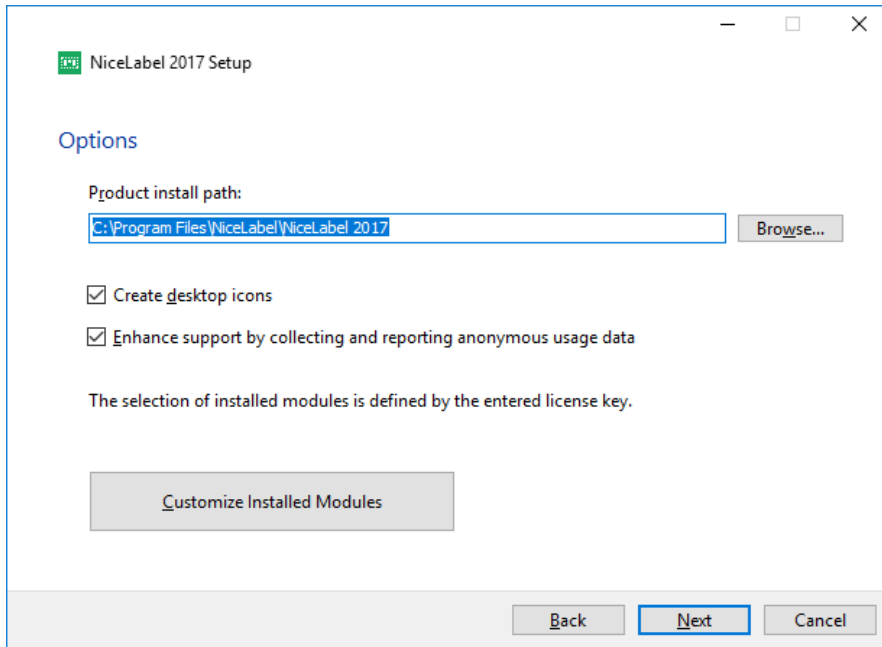
Accept the terms of the License Agreement and select Next.



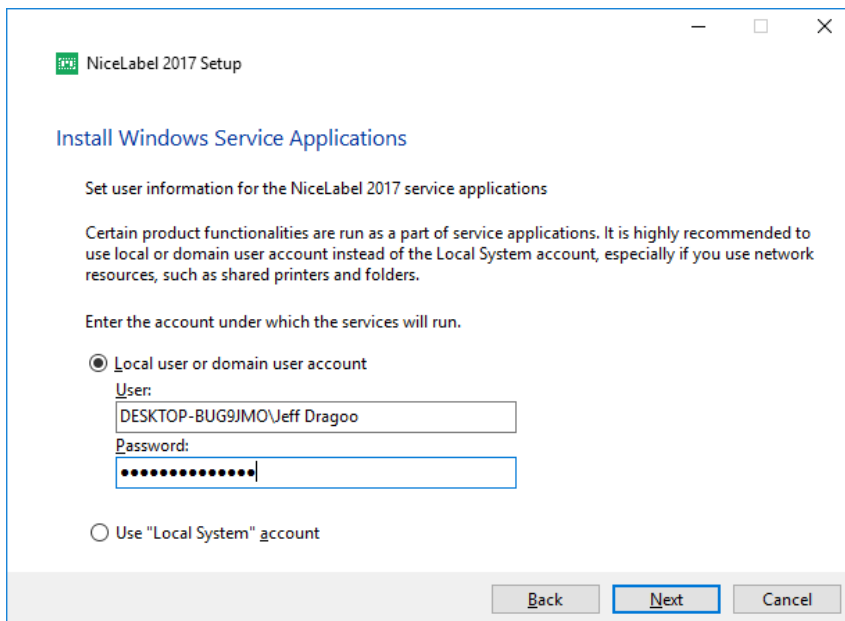
Choose the License key or hardware key and select Next.



Enter the license key provided and select Next.

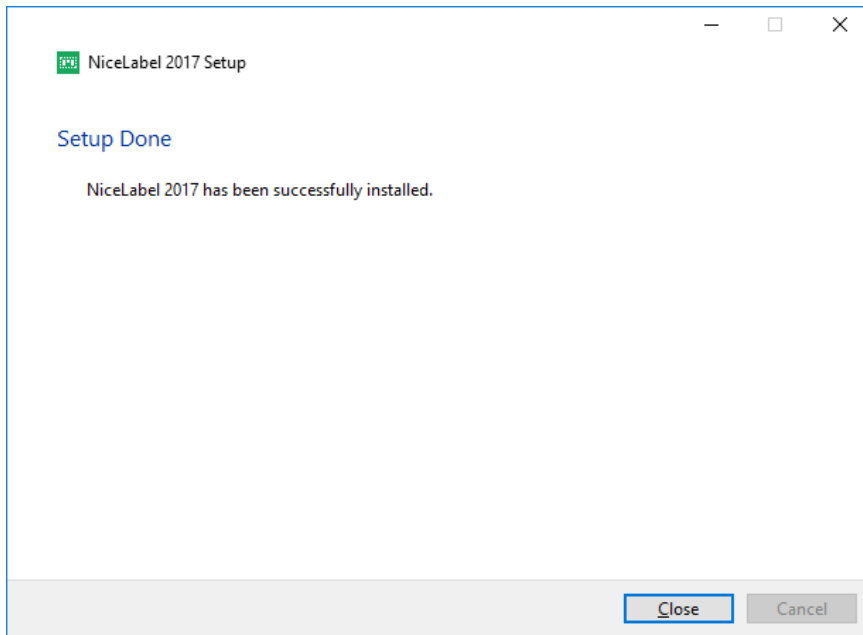


Desktop icons and enhance support are options. Select Next to continue.

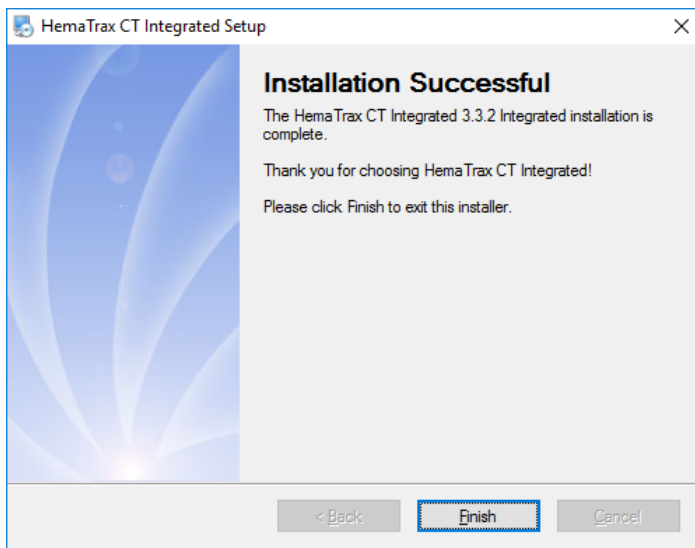


Select the user account to associate with the installation. Select Next.

User privileges for service mode. The execution component of NiceLabel Automation runs in service mode under specified user account inheriting access privileges of that account. For NiceLabel Automation to be able to open label files and user printer drivers, the associated user account must have granted the same privileges. For more information, see the topic Running in Service Mode.



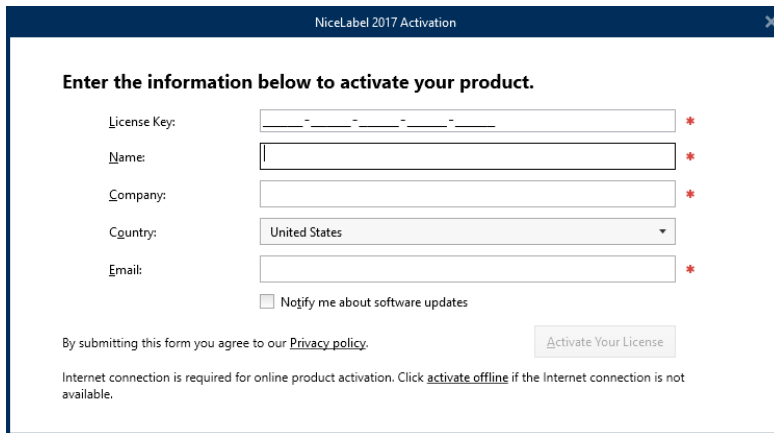
You should receive a Setup Done message from NiceLabel. Select Close.



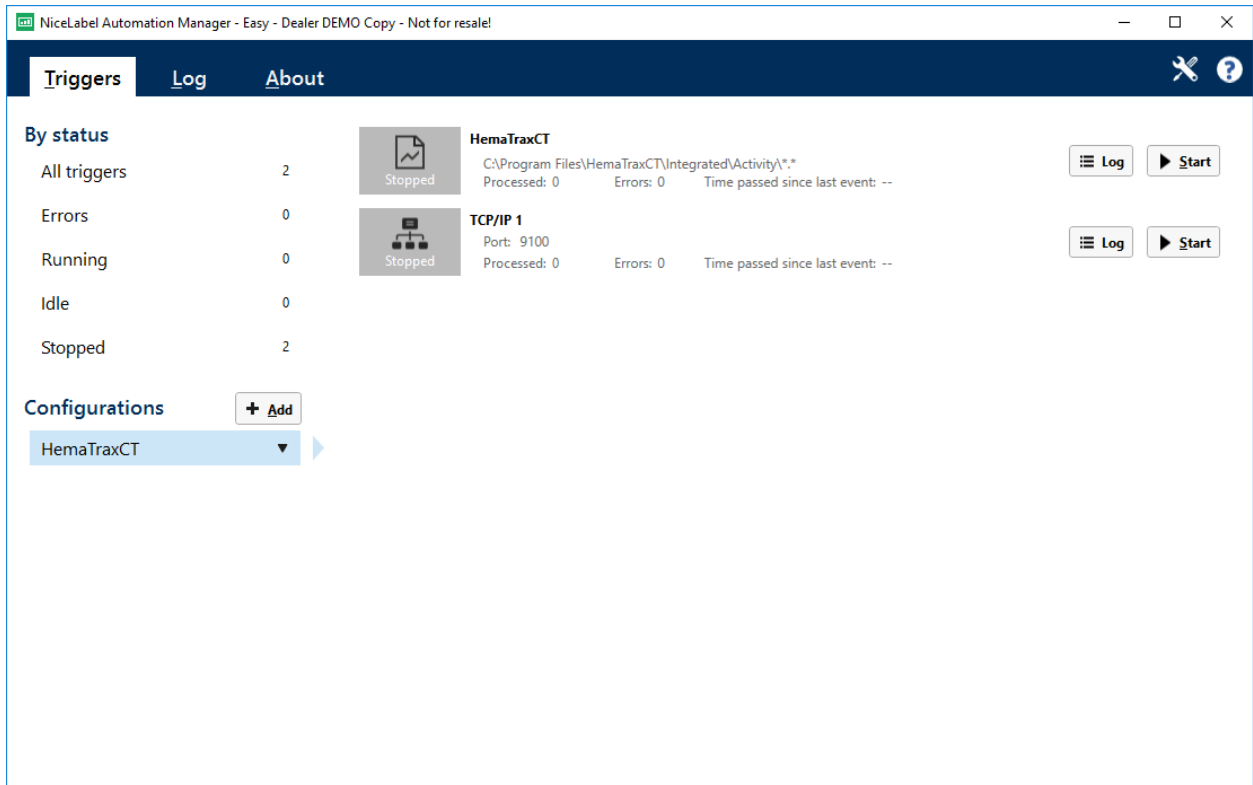
An Installation Successful message from HemaTrax CT. Select Finish.



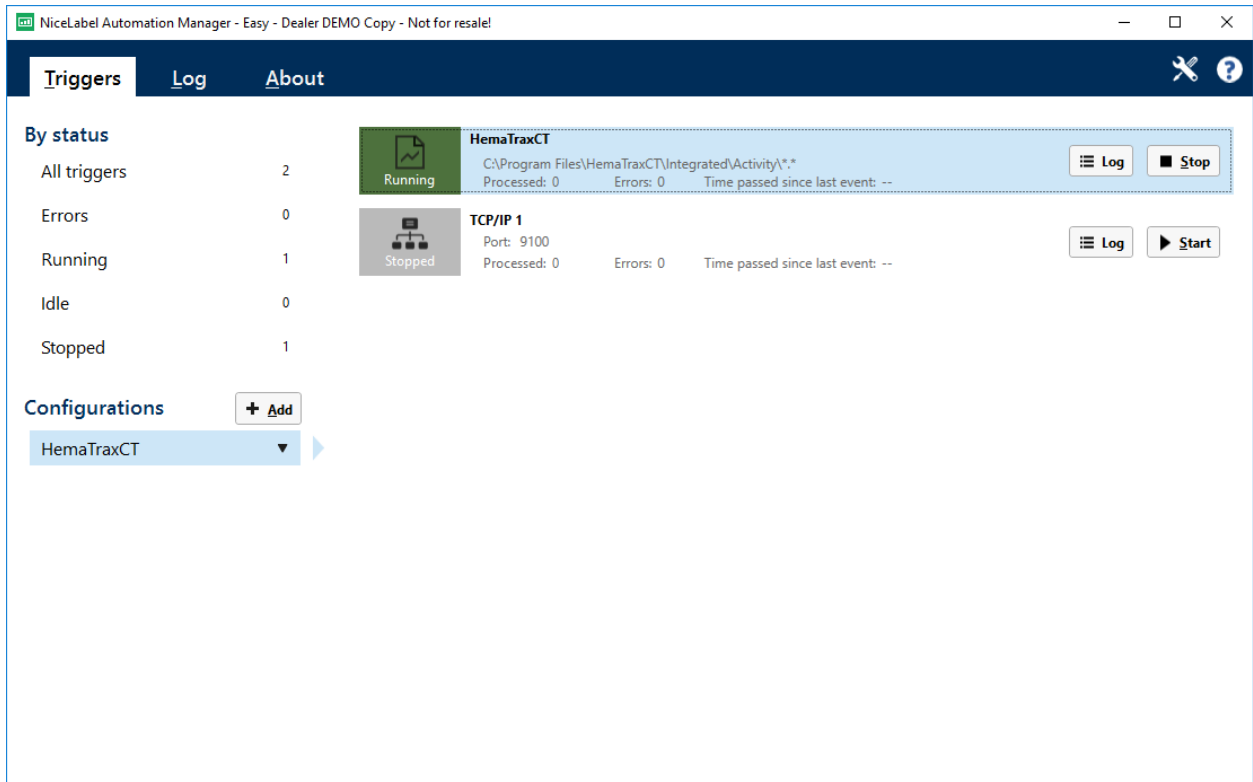
Upon finishing, NiceWare will want you to activate your software. Select Activate Now.



Complete the information requested and select Activate Your License. If you have a network connection it will automatically connect to the internet and activate.



If successful, the Automation Manager will start up. It should load the HemaTraxCT configuration located on the left side of the Manager window. On the right side are the triggers. If the HemaTraxCT trigger is stopped, go ahead and select the start button. You do not need to start the TCP/IP 1 trigger.



When HemaTraxCT is running the icon will be green and say Running. If there is an error, the icon will be red and you will be able to view the error in the Log.

You have successfully installed HemaTrax CT. You may begin generating labels from your host software.

If you run into any issues during installation, you may contact us at:

Digi-Trax
650 Heathrow Drive
Lincolnshire, IL 60069
(847)613-2100

Running In Service Mode

NiceLabel Automation runs as Windows service and is designed not to require any user intervention when processing data and executing actions. The service is configured to start when the operating system is booted and will run in the background as long as Windows is running. NiceLabel Automation will remember the list of all loaded configurations and active triggers. The last-known state is automatically restored when the server restarts.

The service runs with the privileges of the user account selected during the installation. The service will inherit all access permissions of that user account, including access to network shared resources, such as network drives and printer drivers. Use the account of some existing user with sufficient privileges, or even better, create a dedicate account just for NiceLabel Automation.

You can manage the service by launching the Services from the Windows Control Panel. In modern Windows operating systems you can also manage the service in the Services tab in Windows Task Manager. You would use Services to execute tasks such as:

- Start and stop the service
- Change the account under which the service logs on

Good Practices Configuring the User Account for Service

- While possible it is considered a bad practice to run the service under the Local System Account. This is a predefined local Windows account with extensive privileges on the local computer, but is usually without privileges to access network resources. NiceLabel Automation requires full access to the account's `%temp%` folder, which might not be available for Local System Account.
- If creating a **new user account** for NiceLabel Automation service, make sure that you log in Windows with this new user at least once. This will make sure that the user account is fully created. E.g. when you log in, the temporary folder `%temp%` will be created.
- Disable the requirement to occasionally change password for this user account.
- Make sure the account has permissions to **Log on as service**.
- Run the Service in x64 (64-bit) mode.

Accessing Resources

NiceLabel Automation inherits all privileges from the Windows user account under which the service runs. The service executes all actions under that account name. Label can be opened, if the account has permissions to access the file. Label can be printed, if the account has access to the printer driver.

When using revision control system and approval steps inside Document Storage in Control Center, you have to make service's user account member of the 'Print-Only' profile, such as **Operator**. Then configure access permissions for specific folder to **read-only** mode or profile Operator. This will make sure that NiceLabel Automation will only use the approved labels, not drafts.