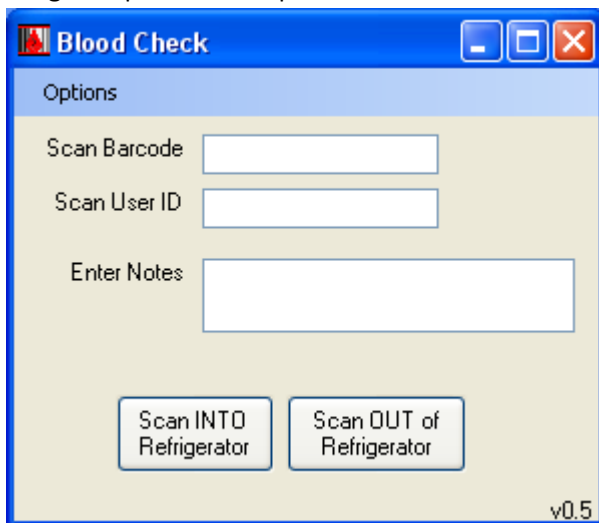


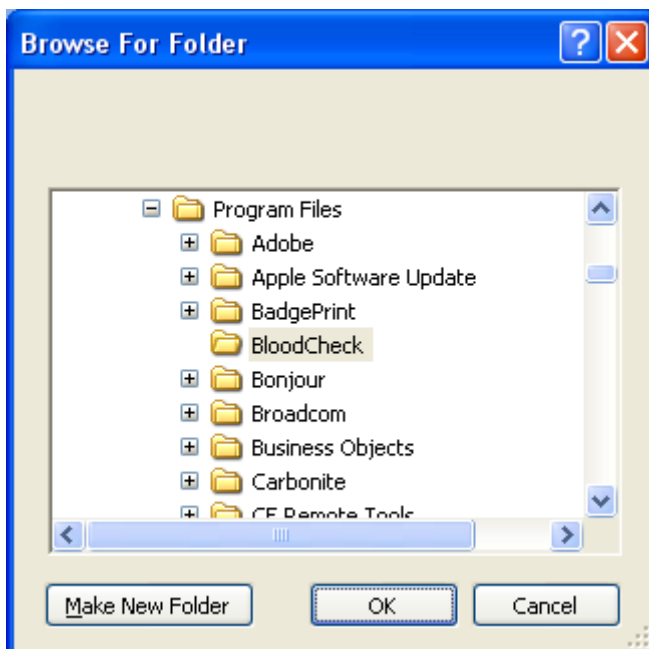
BloodCheck 0.5 Setup and Use

Setup the Local and Network Locations

1. Open Blood Check by double clicking on the Desktop Shortcut or going to Start|All Programs|BloodCheck|BloodCheck.exe

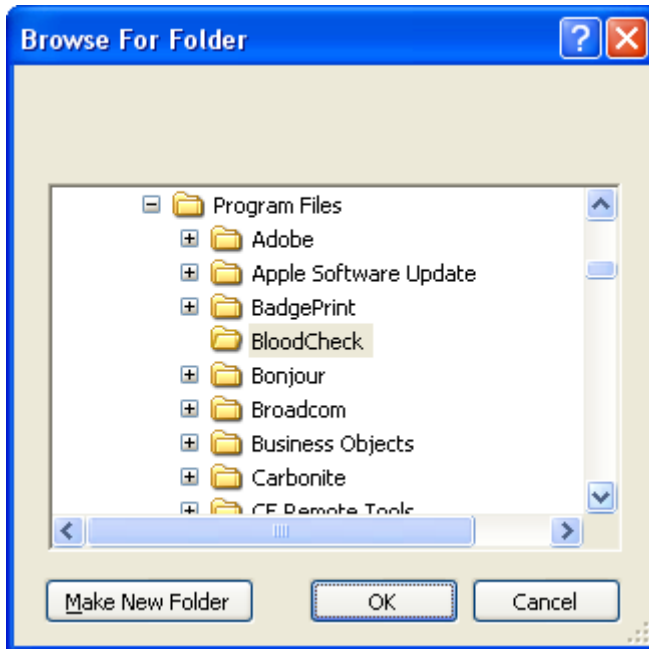


2. You will first want to select where to write the check in/out data. Under Options, there are two choices. Local and Network Database Location. Select the local database location first.



3. By default, the local database will be stored in the c:\Program Files\BloodCheck folder. You can change that location by browsing to the folder you want to store the local data. The name of this file is logfile.txt and is stored as a tab delimited text file. If the file doesn't exist in the folder chosen, the program will create a new file.

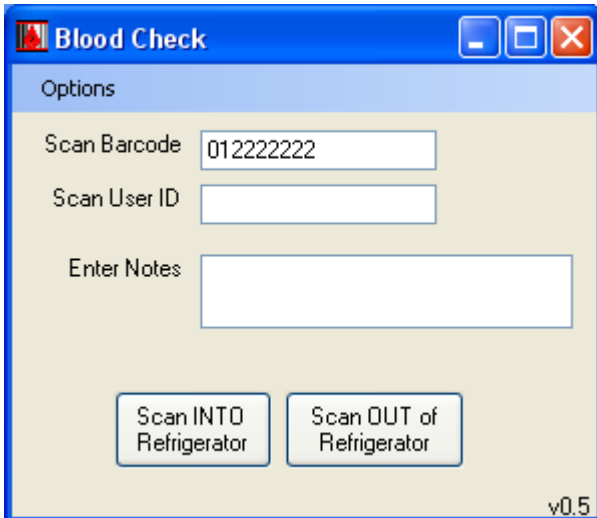
4. Select OK and then select Options | Network Database Location



5. Here you will browse to the appropriate folder (and drive) to store the network database. This database is in MS Access format and is named BloodCheckLog.mdb. The default location is also c:\Program Files\BloodCheck for this file.
6. Select OK
7. After you have set the network database location, you will want to move the BloodCheckLog.mdb file to that new location as the software will not create a new file for you

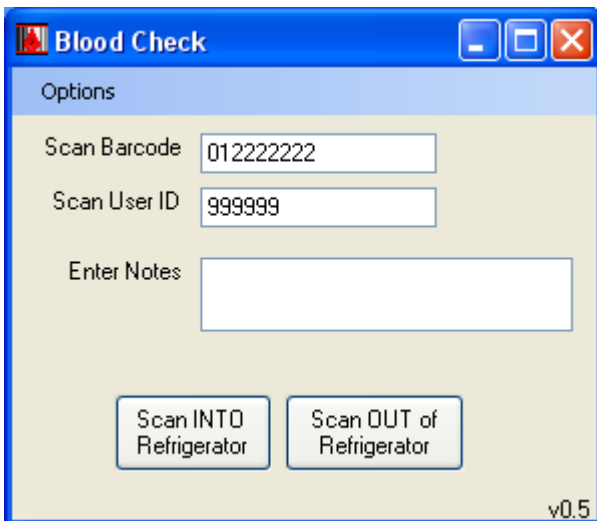
BloodCheck Use

1. With the BloodCheck client running, scan the bag ID into the Scan Barcode Field. Depending on the type of barcode (Codabar or ISBT 128) will determine the data that appears in the field.



The screenshot shows the 'Blood Check' application window. The title bar reads 'Blood Check' and includes standard window controls. Below the title bar is an 'Options' section. The 'Scan Barcode' field contains the value '012222222'. The 'Scan User ID' field is empty. Below these fields is a large text area labeled 'Enter Notes'. At the bottom of the window are two buttons: 'Scan INTO Refrigerator' and 'Scan OUT of Refrigerator'. The version number 'v0.5' is visible in the bottom right corner.

2. Then scan or enter the Users ID number.



The screenshot shows the 'Blood Check' application window. The title bar reads 'Blood Check' and includes standard window controls. Below the title bar is an 'Options' section. The 'Scan Barcode' field contains the value '012222222'. The 'Scan User ID' field contains the value '9999999'. Below these fields is a large text area labeled 'Enter Notes'. At the bottom of the window are two buttons: 'Scan INTO Refrigerator' and 'Scan OUT of Refrigerator'. The version number 'v0.5' is visible in the bottom right corner.

3. If there are any notes to add, type them in the field provided.

Blood Check

Options

Scan Barcode: 012222222

Scan User ID: 999999

Enter Notes: This is a test

Scan INTO Refrigerator Scan OUT of Refrigerator

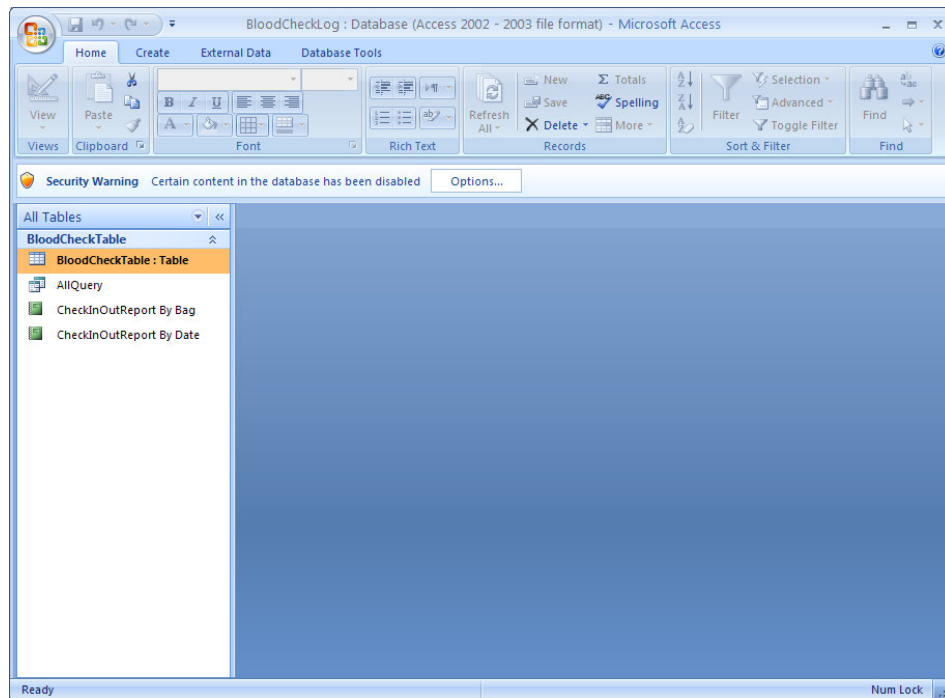
v0.5

4. Select the appropriate button to check in/out the product, depending on if the bag is going into the refrigerator or coming out of the refrigerator.

Viewing data

Using MS Access, you can open and view the database and any reports.

1. Browse to the folder you are writing the network data to and open the BloodCheckLog.mdb file. MS Access will open the file.



2. You will see 2 reports on the left hand side (their icons look like notebooks). They are named CheckInOutReport By Bag (sorted by Bag #) and CheckInOutReport By Date (sorted by Date/Time).
3. Double click on either to view the report which shows all the check in/out records created.

