



# Installation Guide for CorneaTrax<sup>®</sup> 1.0

July 2015



ISBT 128 compliant labeling for eye banks



650 Heathrow Drive  
Lincolnshire, Illinois 60069

[www.digi-trax.com](http://www.digi-trax.com)  
©2015 Digi-Trax<sup>®</sup>

## What's Included

CorneaTrax 1.0 CD

USB License Key

Installation Guide

**Note:** The USB license key must remain with the computer that is running CorneaTrax. You will not be able to print a label without the key installed.

## Installing CorneaTrax

1. Insert the provided CorneaTrax CD. The installation should begin automatically. There will be a warning before certain files are being installed as there is a long pause and the computer may seem unresponsive.
2. Once successfully installed, insert the USB key into the computer. It should light up when recognized by Windows.
3. Keep your USB key installed on that computer. Without it, CorneaTrax will not print.
4. Start CorneaTrax.

## Configuring the Windows Driver for CorneaTrax

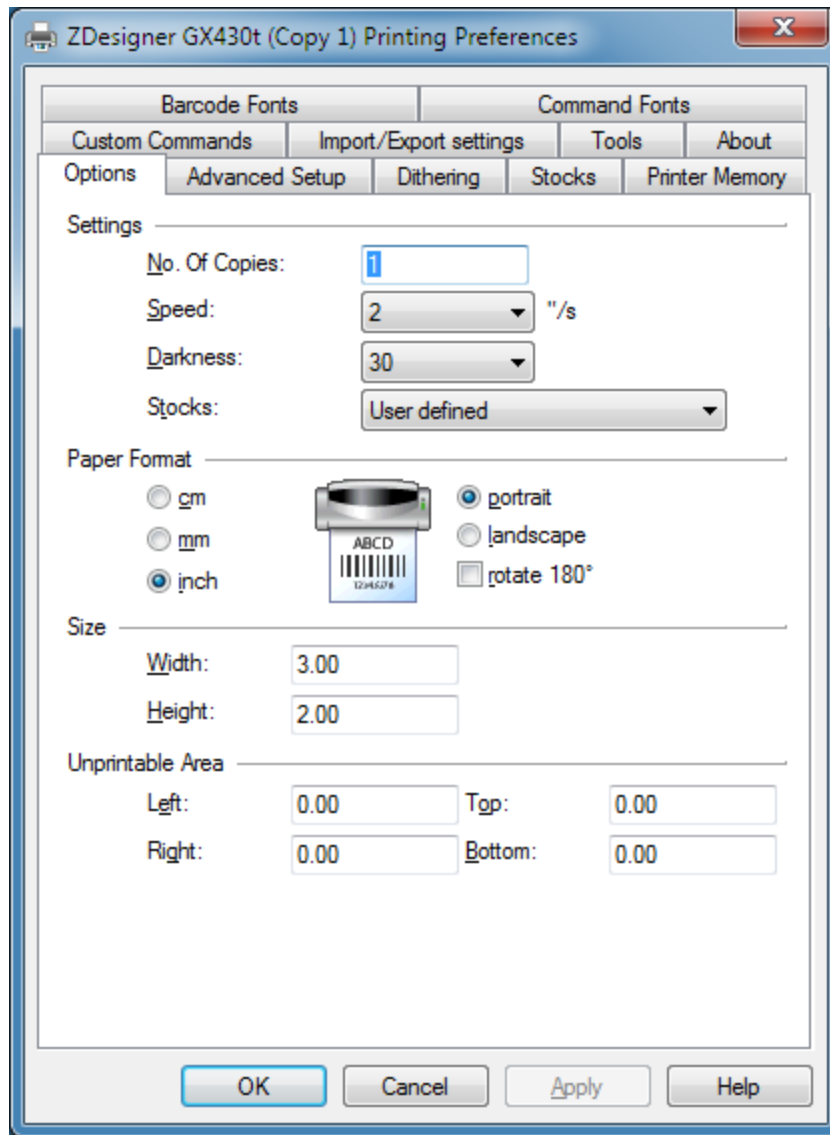
CorneaTrax uses Windows native drivers to print.

### Installing the Zebra Windows Driver

Please follow the quick start guide included with the Zebra G series printer for installing a windows driver. For best compatibility, select the ZDesigner driver.

### Configuring the Zebra driver for CorneaTrax

1. Make sure CorneaTrax is closed.
2. Navigate to the Printers and Faxes or Devices and Printers folder.
3. Right click on the newly installed driver and select Printing Preferences.



4. Change the Speed option to 2"/s
5. Change the Darkness to 30. If the resulting print is too dark, reduce the number to achieve the proper darkness.
6. Select Apply. Then OK.
7. Start CorneaTrax.