



# ZEBRA Healthcare Products and Solutions Guide



Premier  
**Solution Partner**  
Advanced Healthcare Specialist



# Zebra Healthcare Solutions

## Help Improve Patient Safety and Operations

The ability to instantly verify patient information is crucial to help reduce the instance of clinical errors. By connecting patient data, clinicians and providers in real time using Zebra's healthcare technology solutions, you can empower clinicians using advanced hospital printers, barcoded wristbands, labels, scanners and mobile computers to positively identify the right patient, the right medication, the right specimen, the right medication dose, and the right procedure at the right time.

With Zebra's purpose-built solutions, you can ensure easy access to critical patient data through seamless integration and device management:

- o **WorkforceConnect** allows you to access information, take voice calls without being tied to a desk phone, instantly reach a co-worker, or manage a team located across a healthcare facility with push-to-talk and secure text messaging.
- o **VisibilityIQ™** gives you clear, instant business intelligence about your Zebra devices for data-driven insights to enable smoother operations, and includes VisibilityIQ Foresight, VisibilityIQ DNA and VisibilityIQ OneCare®.
- o **Zebra DNA** is a portfolio of software, applications and utilities such as Printer Profile Manager Enterprise and the patented 123Scan scanner configuration that transform Zebra hardware into true enterprise solutions.
- o **Zebra OneCare Support Services** provides unmatched service, support and repair right from the manufacturer across the full product range, limiting unexpected disruptions and unbudgeted repairs.

### Index

Identify the right Zebra products and solutions across multiple applications.

Specimen Collection	Page 3
Alternative Care Facilities	Page 5
Admissions and Positive Patient Identification	Page 7
On the Ward and Bedside Care	Page 9
Mobile Clinician Communication and Data Management	Page 11
Laboratory: Blood Bag, Slide and Specimen Labeling	Page 12
Pharmacy	Page 13
Non-Clinical Services	Page 15








# Drive-Through Specimen Collection

Product	Application	Description	Key Technical Features
TC52x-HC			
	<ul style="list-style-type: none"> <li>Specimen collection and tracking</li> <li>Electronic patient record access</li> <li>Staff communication</li> <li>Medication administration</li> <li>Alert management</li> <li>Inventory management</li> <li>Blood transfusion administration</li> <li>Voice calls</li> <li>Secure text messaging</li> </ul>	<ul style="list-style-type: none"> <li>Durable device built for healthcare, with Android's unmatched ease of use, combined with superior clinical collaboration, data capture and device management tools</li> <li>Sanitizable device built for round-the-clock use</li> <li>SE4720 imager with white illumination LEDs and green aimer</li> </ul>	<ul style="list-style-type: none"> <li>IP65 sealing</li> <li>5" full high definition touch screen</li> <li>Integrated NFC for easy pairing</li> <li>Front and rear facing camera</li> <li>Integrated 1D/2D scan engine</li> <li>4 ft./1.2 m drop spec</li> <li>Advanced medical grade plastics able to withstand frequent cleanings from a wide selection of disinfectants</li> </ul>
TC52-HC			
	<ul style="list-style-type: none"> <li>Specimen collection and tracking</li> <li>Electronic patient record access</li> <li>Staff communication</li> <li>Alert management</li> <li>Medication administration</li> <li>Breast milk management</li> <li>Secure text messaging</li> </ul>	<ul style="list-style-type: none"> <li>Durable device built for healthcare, with Android's unmatched ease of use, combined with superior clinical collaboration, data capture and device management tools</li> <li>Sanitizable device built for round-the-clock use</li> <li>SE4710 imager with red illumination/amber aimer</li> </ul>	<ul style="list-style-type: none"> <li>IP65 sealing</li> <li>5" full high definition touch screen</li> <li>Front and rear facing camera</li> <li>1D/2D scanning</li> <li>4 ft./1.2 m drop spec</li> <li>Advanced medical grade plastics able to withstand frequent cleanings from a wide selection of disinfectants</li> <li>Integrated NFC for easy pairing</li> </ul>
ET40-HC and ET45-HC			
	<ul style="list-style-type: none"> <li>Mobile access to clinical information</li> <li>Mobile nurse, mobile doctor</li> </ul>	<ul style="list-style-type: none"> <li>Enterprise-class tablet, with Android™ operating system</li> <li>Rugged frame options withstand drops</li> <li>Best-in-class display brightness</li> <li>ET45-HC includes cellular connectivity in addition to WiFi</li> </ul>	<ul style="list-style-type: none"> <li>IP65 sealed</li> <li>10.1 in/25.7 cm display</li> <li>Front and rear facing camera</li> <li>1D/2D</li> <li>3.3 ft/1 m to concrete drop specification</li> <li>6 ft/1.8 m with rugged frame</li> </ul>
DS9908-HD			
	<ul style="list-style-type: none"> <li>Specimen tracking</li> <li>Chain of custody</li> </ul>	<ul style="list-style-type: none"> <li>Premium hybrid form factor (handheld/hands-free)</li> <li>Purpose-built for laboratories</li> <li>1D and 2D barcode scanner</li> </ul>	<ul style="list-style-type: none"> <li>Corded</li> <li>RFID option</li> <li>Illumination: White</li> <li>Aimer: Green</li> </ul>
DS8100-HC			
	<ul style="list-style-type: none"> <li>Specimen tracking</li> <li>Chain of custody</li> </ul>	<ul style="list-style-type: none"> <li>Premium healthcare scanner</li> <li>1D and 2D barcode scanner</li> <li>Plastic that reduces the spread of infection</li> </ul>	<ul style="list-style-type: none"> <li>Cordless and corded options</li> <li>Purpose-built housing</li> <li>Night mode</li> <li>Lamp mode</li> <li>PowerPrecision+ battery or a PowerCap™ capacitor</li> <li>Battery charge gauge</li> <li>Illumination: White</li> <li>Aimer: Green</li> </ul>



## Drive-Through Specimen Collection (cont.)

Product	Application	Description	Key Technical Features
ZD510-HC			
	<ul style="list-style-type: none"> <li>Patient identification</li> <li>Specimen labeling</li> </ul>	<ul style="list-style-type: none"> <li>Most popular, easy to use, on demand wristband printer</li> <li>Easy-to-load cartridges</li> <li>Disinfectant-ready</li> <li>Works with Zebra's Z-Band Direct thermal antimicrobial wristbands</li> </ul>	<ul style="list-style-type: none"> <li>Direct thermal print</li> <li>300 dpi</li> <li>Medical grade power supply (IEC 60601-1)</li> </ul>
Z-Band UltraSoft			
	<ul style="list-style-type: none"> <li>Patient ID</li> </ul>	<ul style="list-style-type: none"> <li>One of the softest thermal wristbands in the market</li> </ul>	<ul style="list-style-type: none"> <li>Up to 4X more durable to hand sanitizers than the leading competitor</li> <li>Adhesive closure</li> <li>Available in standard and bracelet shape*</li> <li>Available in multiple sizes</li> <li>Available in a Maternity ID Solution to streamline the identification process with the print of wristbands in one set, enabling identification and association of a mother and her newborn baby.</li> </ul> <p>*Not available in EMEA</p>
ZD410-HC			
	<ul style="list-style-type: none"> <li>Specimen labeling</li> <li>Patient ID</li> <li>Medical record labeling</li> <li>Patient file label</li> </ul>	<ul style="list-style-type: none"> <li>Ultra compact. fits anywhere 2-inch print width</li> <li>Disinfectant-ready, easy-to-clean plastics with sealed button interface</li> <li>Healthcare-compliant power supply</li> </ul>	<ul style="list-style-type: none"> <li>Direct thermal print mode</li> <li>203dpi, 300 dpi optional</li> <li>USB and USB Host standard; Serial, Ethernet, Wireless optional</li> </ul>





# Alternative Care Sites

Product	Application	Description	Key Technical Features
TC52x-HC			
	<ul style="list-style-type: none"> <li>Specimen collection and tracking</li> <li>Electronic patient record access</li> <li>Staff communication</li> <li>Medication administration</li> <li>Alert management</li> <li>Inventory management</li> <li>Blood transfusion administration</li> <li>Voice calls</li> <li>Secure text messaging</li> </ul>	<ul style="list-style-type: none"> <li>Durable device built for healthcare, with Android's unmatched ease of use, combined with superior clinical collaboration, data capture and device management tools</li> <li>Sanitizable device built for round-the-clock use</li> <li>SE4720 imager with white illumination LEDs and green aimer</li> </ul>	<ul style="list-style-type: none"> <li>IP65 sealing</li> <li>5" full high definition touch screen</li> <li>Integrated NFC for easy pairing</li> <li>Front and rear facing camera</li> <li>Integrated 1D/2D scan engine</li> <li>4 ft./1.2 m drop spec</li> <li>Advanced medical grade plastics able to withstand frequent cleanings from a wide selection of disinfectants</li> </ul>
TC52-HC			
	<ul style="list-style-type: none"> <li>Electronic patient record access</li> <li>Specimen collection and tracking</li> <li>Staff communication</li> <li>Alert management</li> <li>Medication administration</li> <li>Blood transfusion</li> <li>Medication administration</li> <li>Breast milk management</li> <li>Secure text messaging</li> </ul>	<ul style="list-style-type: none"> <li>Durable device built for healthcare, with Android's unmatched ease of use, combined with superior clinical collaboration, data capture and device management tools</li> <li>Sanitizable device built for round-the-clock use</li> <li>SE4710 imager with red illumination/amber aimer</li> </ul>	<ul style="list-style-type: none"> <li>IP65 sealing</li> <li>5" full high definition touch screen</li> <li>Front and rear facing camera</li> <li>1D/2D scanning</li> <li>4 ft./1.2 m drop spec</li> <li>Advanced medical grade plastics able to withstand frequent cleanings from a wide selection of disinfectants</li> <li>Integrated NFC for easy pairing</li> </ul>
TC21-HC / TC26-HC			
	<ul style="list-style-type: none"> <li>Electronic patient record access</li> <li>Medication administration</li> <li>Specimen collection</li> <li>Ancillary healthcare (environmental health, patient transport, food services, facilities management, materials management, engineering and security etc)</li> </ul>	<ul style="list-style-type: none"> <li>Durable device built for healthcare, with Android's unmatched ease of use, combined with superior clinical collaboration, data capture and device management tools</li> <li>Sanitizable device built for round-the-clock use</li> </ul>	<ul style="list-style-type: none"> <li>IP67 sealing</li> <li>5" full high definition touch screen</li> <li>Integrated NFC for easy pairing</li> <li>Front and rear facing camera</li> <li>Barcode scanning available via camera</li> <li>Optional 1D/2D scan engine*</li> <li>4 ft./1.2 m drop spec</li> <li>Advanced medical grade plastics able to withstand frequent cleanings from a wide selection of disinfectants</li> <li>WWAN: 4G LTE - TC26-HC only</li> </ul> <p>*(optional scanning engine available in all regions apart from North America)</p>
ET40-HC and ET45-HC			
	<ul style="list-style-type: none"> <li>Mobile access to clinical information</li> <li>Mobile nurse, mobile doctor</li> </ul>	<ul style="list-style-type: none"> <li>Enterprise-class tablet, with Android™ operating system</li> <li>Rugged frame options withstand drops</li> <li>Best-in-class display brightness</li> <li>ET45-HC includes cellular connectivity in addition to WiFi</li> </ul>	<ul style="list-style-type: none"> <li>IP65 sealed</li> <li>10.1 in/25.7 cm display</li> <li>Front and rear facing camera</li> <li>1D/2D</li> <li>3.3 ft/1 m to concrete drop specification</li> <li>6 ft/1.8 m with rugged frame</li> </ul>



## Alternative Care Facilities (cont.)

Product	Application	Description	Key Technical Features
DS9908-HD			
	<ul style="list-style-type: none"> <li>Medication administration</li> <li>Specimen collection and tracking</li> <li>Chain of custody</li> <li>Blood product administration</li> <li>Electronic patient record access</li> </ul>	<ul style="list-style-type: none"> <li>Premium hybrid form factor (handheld/hands-free)</li> <li>Purpose-built for laboratories</li> <li>1D and 2D barcode scanner</li> </ul>	<ul style="list-style-type: none"> <li>Corded</li> <li>RFID option</li> <li>Illumination: White</li> <li>Aimer: Green</li> </ul>
DS8100-HC			
	<ul style="list-style-type: none"> <li>Medication administration</li> <li>Specimen collection and tracking</li> <li>Chain of custody</li> <li>Blood product administration</li> <li>Electronic patient record access</li> </ul>	<ul style="list-style-type: none"> <li>Premium healthcare scanner</li> <li>1D and 2D barcode scanner</li> <li>Plastic that reduces the spread of infection</li> </ul>	<ul style="list-style-type: none"> <li>Cordless and corded options</li> <li>Purpose-built housing</li> <li>Night mode</li> <li>Lamp mode</li> <li>PowerPrecision+ battery or a PowerCap™ capacitor</li> <li>Battery charge gauge</li> <li>Illumination: White</li> <li>Aimer: Green</li> </ul>
Z-Band UltraSoft			
	<ul style="list-style-type: none"> <li>Patient ID/Specimen labeling</li> </ul>	<ul style="list-style-type: none"> <li>One of the softest thermal wristbands in the market</li> <li>Easy-to-load cartridges</li> </ul>	<ul style="list-style-type: none"> <li>Up to 4X more durable to hand sanitizers than the leading competitor</li> <li>Adhesive closure</li> <li>Available in standard and bracelet shape*</li> <li>Available in multiple sizes</li> <li>Available in a Maternity ID Solution to streamline the identification process with the print of wristbands in one set, enabling identification and association of a mother and her newborn baby</li> </ul> <p>*Not available in EMEA</p>
ZD510-HC			
	<ul style="list-style-type: none"> <li>Patient identification</li> <li>Specimen labeling</li> </ul>	<ul style="list-style-type: none"> <li>Most popular, easy to use, on demand wristband printer</li> <li>Easy-to-load cartridges</li> <li>Disinfectant-ready</li> <li>Works with Zebra's Z-Band Direct thermal antimicrobial wristbands</li> </ul>	<ul style="list-style-type: none"> <li>Direct thermal print</li> <li>300 dpi</li> <li>Medical grade power supply (IEC 60601-1)</li> </ul>
ZD411-HC			
	<ul style="list-style-type: none"> <li>Specimen labeling</li> <li>Patient ID</li> <li>Medical record labeling</li> <li>Patient file label</li> </ul>	<ul style="list-style-type: none"> <li>Ultra compact. fits anywhere 2-inch print width</li> <li>Disinfectant-ready, easy-to-clean plastics with sealed button interface</li> <li>Healthcare-compliant power supply</li> </ul>	<ul style="list-style-type: none"> <li>Direct thermal print mode</li> <li>203dpi, 300 dpi optional</li> <li>USB and USB Host standard; Serial, Ethernet, Wireless optional</li> </ul>



# Admissions and Positive Patient Identification

Product	Application	Description	Key Technical Features
ZD510-HC			
	<ul style="list-style-type: none"> <li>Patient identification</li> </ul>	<ul style="list-style-type: none"> <li>Most popular, easy to use, on demand wristband printer</li> <li>Easy-to-load cartridges</li> <li>Disinfectant-ready</li> <li>Works with Zebra's Z-Band Direct thermal antimicrobial wristbands</li> </ul>	<ul style="list-style-type: none"> <li>Direct thermal print</li> <li>300 dpi</li> <li>Medical grade power supply (IEC 60601-1)</li> </ul>
ZD621-HC			
	<ul style="list-style-type: none"> <li>Medical records labeling</li> <li>Patient ID wristbands</li> <li>Lab and specimen labels</li> <li>Blood and IV bag labels</li> <li>Asset labels</li> </ul>	<ul style="list-style-type: none"> <li>4" Label Printer</li> <li>Plastic that reduces the spread of infection</li> <li>UV-ready housing designed for clinical environments</li> <li>Thermal transfer model includes time-saving ribbon cartridge loading or traditional roll-based ribbon</li> </ul>	<ul style="list-style-type: none"> <li>Direct thermal or thermal transfer options</li> <li>203 and 300 dpi</li> <li>USB, USB Host, Bluetooth Low Energy, Ethernet, dual wireless option; Mifi certified Bluetooth 4.1 and Wi-Fi certified 802.11ac WLAN</li> <li>Medical grade power supply (IEC 60601-1)</li> <li>4.3" full-color, touch LCD display with intuitive interface menu</li> </ul>
ZD421-HC			
	<ul style="list-style-type: none"> <li>Medical records labeling</li> <li>Patient ID wristbands</li> <li>Lab and specimen labels</li> <li>Blood and IV bag labels</li> <li>Asset labels</li> </ul>	<ul style="list-style-type: none"> <li>4" Label Printer</li> <li>Plastic that reduces the spread of infection</li> <li>UV-ready housing designed for clinical environments</li> <li>Thermal transfer model includes time-saving ribbon cartridge loading or traditional roll-based ribbon</li> </ul>	<ul style="list-style-type: none"> <li>Direct thermal and thermal transfer options</li> <li>203 and 300 dpi</li> <li>USB, USB Host, Bluetooth Low Energy, Ethernet, dual wireless option; Mifi certified Bluetooth 4.1 and Wi-Fi certified 802.11ac WLAN</li> <li>Medical grade power supply (IEC 60601-1)</li> </ul>
ZD410-HC			
	<ul style="list-style-type: none"> <li>Specimen labeling</li> <li>Patient ID</li> <li>Medical record labeling</li> <li>Patient file label</li> </ul>	<ul style="list-style-type: none"> <li>Ultra compact. fits anywhere 2-inch print width</li> <li>Disinfectant-ready, easy-to-clean plastics with sealed button interface</li> <li>Healthcare-compliant power supply</li> </ul>	<ul style="list-style-type: none"> <li>Direct thermal print mode</li> <li>203dpi, 300 dpi optional</li> <li>USB and USB Host standard; Serial, Ethernet, Wireless optional</li> </ul>
DS8100-HC			
	<ul style="list-style-type: none"> <li>Patient ID</li> <li>Admissions</li> <li>Patient file management</li> <li>Medication administration</li> <li>Blood product administration</li> </ul>	<ul style="list-style-type: none"> <li>Premium healthcare scanner</li> <li>1D and 2D barcode scanner</li> <li>Plastic that reduces the spread of infection</li> </ul>	<ul style="list-style-type: none"> <li>Cordless and corded options</li> <li>Purpose-built housing</li> <li>Night mode</li> <li>Lamp mode</li> <li>PowerPrecision+ battery or a PowerCap™ capacitor</li> <li>Battery charge gauge</li> <li>Illumination: White</li> <li>Aimer: Green</li> </ul>
DS4608-HC			
	<ul style="list-style-type: none"> <li>Patient ID</li> <li>Admissions</li> <li>Patient file management</li> <li>Medication administration</li> <li>Blood product administration</li> </ul>	<ul style="list-style-type: none"> <li>1D and 2D barcode scanner</li> <li>Plastic that reduces the spread of infection</li> </ul>	<ul style="list-style-type: none"> <li>Corded</li> <li>Night mode</li> <li>Illumination: White</li> <li>Aimer: Green</li> </ul>
CS60-HC			
	<ul style="list-style-type: none"> <li>Patient ID</li> <li>Medication administration</li> <li>Blood product administration</li> </ul>	<ul style="list-style-type: none"> <li>Companion form scanner</li> <li>1D/2D/OCR barcode scanner</li> <li>Plastic that reduces the spread of infection</li> </ul>	<ul style="list-style-type: none"> <li>Corded (handheld/presentation)</li> <li>Cordless Bluetooth</li> <li>Apple certified</li> <li>Night mode with vibrate</li> <li>NFC pairing</li> <li>Battery charge gauge</li> </ul>
DS9900-HD			
	<ul style="list-style-type: none"> <li>Patient file management</li> <li>Admissions</li> </ul>	<ul style="list-style-type: none"> <li>Premium hybrid form factor (handheld/hands-free)</li> <li>1D and 2D barcode scanner</li> </ul>	<ul style="list-style-type: none"> <li>Corded</li> <li>RFID option</li> <li>Illumination: White</li> <li>Aimer: Green</li> <li>Optional Driver's License Parsing (NA only)</li> </ul>



## Admissions and Positive Patient Identification (cont.)

Product	Application	Description	Key Technical Features
TC52x-HC			
	<ul style="list-style-type: none"> <li>Specimen collection and tracking</li> <li>Electronic patient record access</li> <li>Staff communication</li> <li>Medication administration</li> <li>Alert management</li> <li>Inventory management</li> <li>Blood transfusion administration</li> <li>Voice calls</li> <li>Secure text messaging</li> </ul>	<ul style="list-style-type: none"> <li>Durable device built for healthcare, with Android's unmatched ease of use, combined with superior clinical collaboration, data capture and device management tools</li> <li>Sanitizable device built for round-the-clock use</li> <li>SE4720 imager with white illumination LEDs and green aimer</li> </ul>	<ul style="list-style-type: none"> <li>IP65 sealing</li> <li>5" full high definition touch screen</li> <li>Integrated NFC for easy pairing</li> <li>Front and rear facing camera</li> <li>Integrated 1D/2D scan engine</li> <li>4 ft./1.2 m drop spec</li> <li>Advanced medical grade plastics able to withstand frequent cleanings from a wide selection of disinfectants</li> </ul>
TC52-HC			
	<ul style="list-style-type: none"> <li>Electronic patient record access</li> <li>Medication administration</li> <li>Specimen tracking and collection</li> <li>Remote patient monitoring</li> <li>Staff communication</li> <li>Alert management</li> <li>Breast milk management</li> <li>Secure text messaging</li> </ul>	<ul style="list-style-type: none"> <li>Durable device built for healthcare, with Android's unmatched ease of use, combined with superior clinical collaboration, data capture and device management tools</li> <li>Sanitizable device built for round-the-clock use</li> <li>SE4710 imager with red illumination/amber aimer</li> </ul>	<ul style="list-style-type: none"> <li>IP65 sealing</li> <li>5" full high definition touch screen</li> <li>Front and rear facing camera</li> <li>1D/2D scanning</li> <li>4 ft./1.2 m drop spec</li> <li>Advanced medical grade plastics able to withstand frequent cleanings from a wide selection of disinfectants</li> <li>Integrated NFC for easy pairing</li> </ul>
Z-Band UltraSoft			
	<ul style="list-style-type: none"> <li>Patient ID</li> </ul>	<ul style="list-style-type: none"> <li>One of the softest thermal wristbands in the market</li> </ul>	<ul style="list-style-type: none"> <li>Up to 4X more durable to hand sanitizers than the leading competitor</li> <li>Adhesive closure</li> <li>Available in standard and bracelet shape*</li> <li>Available in multiple sizes</li> <li>Available in a Maternity ID Solution to streamline the identification process with the print of wristbands in one set, enabling identification and association of a mother and her newborn baby.</li> </ul> <p>*Not available in EMEA</p>
LaserBand2® Advanced			
	<ul style="list-style-type: none"> <li>Patient ID</li> </ul>	<ul style="list-style-type: none"> <li>Self-laminating seal to protect the wristband from moisture and hand sanitizers</li> <li>Adhesive closure</li> <li>Enables use of existing laser printers to print labels/wristbands simultaneously</li> <li>Available in multiple sizes</li> </ul>	<ul style="list-style-type: none"> <li>Lies flat for quick scanning</li> <li>Easy assembly</li> </ul>
Z-Band Newborn			
	<ul style="list-style-type: none"> <li>Infant ID</li> </ul>	<ul style="list-style-type: none"> <li>Adhesive closure</li> <li>Soft polypropylene material, perfect for delicate skin</li> <li>Adjustable band fits the smallest patients</li> </ul>	<ul style="list-style-type: none"> <li>Flat print area ensures ease of scanning</li> <li>Resistance to hand sanitizers such as Purell®</li> <li>Available in 2 versions: Standard and Soft (features a soft nylon backing)</li> </ul>






# On the Ward and Bedside Care

Product	Application	Description	Key Technical Features
<b>ZD410-HC</b>			
	<ul style="list-style-type: none"> <li>Specimen labeling</li> <li>Patient ID</li> <li>Medical record labeling</li> <li>Patient file label</li> </ul>	<ul style="list-style-type: none"> <li>Ultra compact. fits anywhere 2-inch print width</li> <li>Disinfectant-ready, easy-to-clean plastics with sealed button interface</li> <li>Healthcare-compliant power supply</li> </ul>	<ul style="list-style-type: none"> <li>Direct thermal print mode</li> <li>203dpi, 300 dpi optional</li> <li>USB and USB Host standard; Serial, Ethernet, Wireless optional</li> </ul>
<b>ZQ610/620-HC</b>			
	<ul style="list-style-type: none"> <li>Mobile specimen collection</li> <li>Medication labeling</li> <li>Breast milk labeling</li> </ul>	<ul style="list-style-type: none"> <li>2" or 3" direct thermal mobile label printer</li> <li>Easy to use and manage</li> <li>Compact size</li> <li>Easy-to-load media</li> <li>Intuitive controls</li> <li>Advanced battery technology</li> </ul>	<ul style="list-style-type: none"> <li>Direct thermal and thermal transfer options</li> <li>203dpi</li> <li>Wi-Fi, Bluetooth, Serial, USB and Ethernet</li> </ul>
<b>TC52x-HC</b>			
	<ul style="list-style-type: none"> <li>Specimen collection and tracking</li> <li>Electronic patient record access</li> <li>Staff communication</li> <li>Medication administration</li> <li>Alert management</li> <li>Inventory management</li> <li>Blood transfusion administration</li> <li>Voice calls through PBX</li> <li>Secure text messaging</li> </ul>	<ul style="list-style-type: none"> <li>Durable device built for healthcare, with Android's unmatched ease of use, combined with superior clinical collaboration, data capture and device management tools</li> <li>Sanitizable device built for round-the-clock use</li> <li>SE4720 imager with white illumination LEDs and green aimer</li> </ul>	<ul style="list-style-type: none"> <li>IP65 sealing</li> <li>5" full high definition touch screen</li> <li>Integrated NFC for easy pairing</li> <li>Front and rear facing camera</li> <li>Integrated 1D/2D scan engine</li> <li>4 ft./1.2 m drop spec</li> <li>Advanced medical grade plastics able to withstand frequent cleanings from a wide selection of disinfectants</li> </ul>
<b>TC52-HC</b>			
	<ul style="list-style-type: none"> <li>Medication administration</li> <li>Prescription tracking</li> <li>Blood transfusion administration</li> <li>Electronic patient record access</li> <li>Breast milk management</li> <li>Inventory management</li> <li>Voice calls through PBX</li> <li>Secure text messaging</li> </ul>	<ul style="list-style-type: none"> <li>Durable device built for healthcare, with Android's unmatched ease of use, combined with superior clinical collaboration, data capture and device management tools</li> <li>Sanitizable device built for round-the-clock use</li> <li>SE4710 imager with red illumination/amber aimer</li> </ul>	<ul style="list-style-type: none"> <li>IP65 sealing</li> <li>5" full high definition touch screen</li> <li>Front and rear facing camera</li> <li>1D/2D scanning</li> <li>4 ft./1.2 m drop spec</li> <li>Advanced medical grade plastics able to withstand frequent cleanings from a wide selection of disinfectants</li> <li>Integrated NFC for easy pairing</li> </ul>
<b>DS8100-HC</b>			
	<ul style="list-style-type: none"> <li>Medication administration</li> <li>Specimen collection</li> <li>Blood product administration</li> <li>Electronic patient record access</li> </ul>	<ul style="list-style-type: none"> <li>Premium healthcare scanner</li> <li>1D and 2D barcode scanner</li> <li>Plastic that reduces the spread of infection</li> </ul>	<ul style="list-style-type: none"> <li>Cordless and corded options</li> <li>Purpose-built housing</li> <li>Night mode</li> <li>Lamp mode</li> <li>PowerPrecision+ battery or a PowerCap™ capacitor</li> <li>Battery charge gauge</li> <li>Illumination: White</li> <li>Aimer: Green</li> </ul>
<b>DS4608-HC</b>			
	<ul style="list-style-type: none"> <li>Patient ID</li> <li>Admissions</li> <li>Patient file management</li> <li>Medication administration</li> <li>Blood product administration</li> </ul>	<ul style="list-style-type: none"> <li>1D and 2D barcode scanner</li> <li>Plastic that reduces the spread of infection</li> </ul>	<ul style="list-style-type: none"> <li>Corded</li> <li>Night mode</li> <li>Illumination: White</li> <li>Aimer: Green</li> </ul>



## On the Ward and Bedside Care (cont.)

Product	Application	Description	Key Technical Features
CS60-HC			
	<ul style="list-style-type: none"> <li>• Patient ID</li> <li>• Medication administration</li> <li>• Blood product administration</li> </ul>	<ul style="list-style-type: none"> <li>• Companion form scanner</li> <li>• 1D/2D/OCR barcode scanner</li> <li>• Plastic that reduces the spread of infection</li> </ul>	<ul style="list-style-type: none"> <li>• Corded (handheld/presentation)</li> <li>• Cordless Bluetooth</li> <li>• Apple certified</li> <li>• Night mode with vibrate</li> <li>• NFC pairing</li> <li>• Battery charge gauge</li> </ul>



# Mobile Clinician Communication and Data Management

Product	Application	Description	Key Technical Features
TC52x-HC			
	<ul style="list-style-type: none"> <li>Specimen collection and tracking</li> <li>Electronic patient record access</li> <li>Staff communication</li> <li>Medication administration</li> <li>Alert management</li> <li>Inventory management</li> <li>Voice calls through PBX</li> <li>Secure text messaging</li> </ul>	<ul style="list-style-type: none"> <li>Durable device built for healthcare, with Android's unmatched ease of use, combined with superior clinical collaboration, data capture and device management tools</li> <li>Sanitizable device built for round-the-clock use</li> <li>SE4720 imager with white illumination LEDs and green aimer</li> </ul>	<ul style="list-style-type: none"> <li>IP65 sealing</li> <li>5" full high definition touch screen</li> <li>Integrated NFC for easy pairing</li> <li>Front and rear facing camera</li> <li>Integrated 1D/2D scan engine</li> <li>4 ft./1.2 m drop spec</li> <li>Advanced medical grade plastics able to withstand frequent cleanings from a wide selection of disinfectants</li> <li>Integrated NFC for easy pairing</li> </ul>
TC52-HC			
	<ul style="list-style-type: none"> <li>Medication administration</li> <li>Prescription tracking</li> <li>Blood transfusion administration</li> <li>Electronic patient record access</li> <li>Breast milk management</li> <li>Inventory management</li> <li>Voice calls through PBX</li> <li>Secure text messaging</li> </ul>	<ul style="list-style-type: none"> <li>Durable device built for healthcare, with Android's unmatched ease of use, combined with superior clinical collaboration, data capture and device management tools</li> <li>Sanitizable device built for round-the-clock use</li> <li>SE4710 imager with red illumination/amber aimer</li> </ul>	<ul style="list-style-type: none"> <li>IP65 sealing</li> <li>5" full high definition touch screen</li> <li>Front and rear facing camera</li> <li>1D/2D scanning</li> <li>4 ft./1.2 m drop spec</li> <li>Advanced medical grade plastics able to withstand frequent cleanings from a wide selection of disinfectants</li> <li>Integrated NFC for easy pairing</li> </ul>
TC21-HC / TC26-HC			
	<ul style="list-style-type: none"> <li>Electronic patient record access</li> <li>Medication administration</li> <li>Specimen collection</li> <li>Non-clinical healthcare (environmental health, patient transport, food services, facilities management, materials management, engineering and security etc)</li> </ul>	<ul style="list-style-type: none"> <li>Durable device built for healthcare, with Android's unmatched ease of use, combined with superior clinical collaboration, data capture and device management tools</li> <li>Sanitizable device built for round-the-clock use</li> <li>Healthcare Alert button for rapid response</li> <li>Wi-Fi only or Wi-Fi/cellular models available</li> <li>Mobility DNA™ Professional Integrated Solutions included</li> </ul>	<ul style="list-style-type: none"> <li>IP67 sealing</li> <li>5" full high definition touch screen</li> <li>Integrated NFC for easy pairing</li> <li>Front and rear facing camera</li> <li>Barcode scanning available via camera</li> <li>Optional 1D/2D scan engine*</li> <li>4 ft./1.2 m drop spec</li> <li>Advanced medical grade plastics able to withstand frequent cleanings from a wide selection of disinfectants</li> <li>WWAN: 4G LTE - TC26-HC only</li> </ul> <p>* Scan engine option not available in North America</p>
ET40-HC and ET45-HC			
	<ul style="list-style-type: none"> <li>Mobile access to clinical information</li> <li>Mobile nurse, mobile doctor</li> </ul>	<ul style="list-style-type: none"> <li>Enterprise-class tablet, with Android™ operating system</li> <li>Rugged frame options withstand drops</li> <li>Best-in-class display brightness</li> <li>ET45-HC includes cellular connectivity in addition to WiFi</li> </ul>	<ul style="list-style-type: none"> <li>IP65 sealed</li> <li>10.1 in/25.7 cm display</li> <li>Front and rear facing camera</li> <li>1D/2D</li> <li>3.3 ft/1 m to concrete drop specification</li> <li>6 ft/1.8 m with rugged frame</li> </ul>
ZQ610 Plus-HC			
	<ul style="list-style-type: none"> <li>Mobile specimen collection</li> <li>Breast milk labeling</li> </ul>	<ul style="list-style-type: none"> <li>2" direct thermal mobile label printer that's easy to use and easy to manage—compact size, easy-to-load media, intuitive controls, and advanced battery technology</li> </ul>	<ul style="list-style-type: none"> <li>Direct thermal and thermal transfer options</li> <li>203 dpi</li> <li>Wi-Fi, Bluetooth, Serial, USB and Ethernet</li> </ul>
ZQ620 Plus-HC			
	<ul style="list-style-type: none"> <li>Mobile specimen collection</li> <li>Breast milk labeling</li> </ul>	<ul style="list-style-type: none"> <li>3" direct thermal mobile label printer that's easy to use and easy to manage—compact size, easy-to-load media, intuitive controls, and advanced battery technology</li> </ul>	<ul style="list-style-type: none"> <li>Direct thermal and thermal transfer options</li> <li>203 dpi</li> <li>Wi-Fi, Bluetooth, Serial, USB and Ethernet</li> </ul>



# Laboratory: Blood Bag, Slide and Specimen Labeling

Product	Application	Description	Key Technical Features
<b>ZT411</b>			
	<ul style="list-style-type: none"> <li>Asset management/ tagging</li> </ul>	<ul style="list-style-type: none"> <li>RFID Industrial Printers/Encoders</li> </ul>	<ul style="list-style-type: none"> <li>203 dpi / 8 dots per mm, 300 dpi / 12 dots per mm (optional), 600 dpi / 24 dots per mm</li> <li>USB 2.0, high-speed, RS-232 Serial, 10/100 Ethernet, Bluetooth 4.1 and dual USB Host; and optional parallel (bi-directional interface) wireless dual radio with 802.11ac / Bluetooth 4.1, 10/100</li> </ul>
<b>ZT230</b>			
	<ul style="list-style-type: none"> <li>Laboratory labeling</li> <li>Blood bag labeling</li> </ul>	<ul style="list-style-type: none"> <li>Intuitive, effortless media loading</li> <li>High quality printing for crisp, clean text and barcodes—even on narrow media</li> <li>Reliable and durable—built for light industrial and commercial environments</li> </ul>	<ul style="list-style-type: none"> <li>Direct thermal and thermal transfer</li> <li>Up to 4-inch print width</li> <li>USB, serial and Ethernet option</li> </ul>
<b>ZD421-HC</b>			
	<ul style="list-style-type: none"> <li>Medical records labeling</li> <li>Patient ID wristbands</li> <li>Lab and specimen labels</li> <li>Blood and IV bag labels</li> <li>Asset labels</li> </ul>	<ul style="list-style-type: none"> <li>4" Label Printer</li> <li>Plastic that reduces the spread of infection</li> <li>UV-ready housing designed for clinical environments</li> <li>Thermal transfer model includes time-saving ribbon cartridge loading or traditional roll-based ribbon</li> </ul>	<ul style="list-style-type: none"> <li>Direct thermal and thermal transfer options</li> <li>203 and 300 dpi</li> <li>USB, USB Host, Bluetooth Low Energy, Ethernet, dual wireless option; Mifi certified Bluetooth 4.1 and Wi-Fi certified 802.11ac WLAN</li> <li>Medical grade power supply (IEC 60601-1)</li> </ul>
<b>ZD621-HC</b>			
	<ul style="list-style-type: none"> <li>Medical records labeling</li> <li>Patient ID wristbands</li> <li>Lab and specimen labels</li> <li>Blood and IV bag labels</li> <li>Asset labels</li> </ul>	<ul style="list-style-type: none"> <li>4" Label Printer</li> <li>Plastic that reduces the spread of infection</li> <li>UV-ready housing designed for clinical environments</li> <li>Thermal transfer model includes time-saving ribbon cartridge loading or traditional roll-based ribbon</li> </ul>	<ul style="list-style-type: none"> <li>Direct thermal and thermal transfer options</li> <li>203 and 300 dpi</li> <li>4.3-inch, full-color LCD touch display with intuitive menu</li> <li>USB, USB Host, Bluetooth Low Energy, Ethernet, dual wireless option; Mifi certified Bluetooth 4.1 and Wi-Fi certified 802.11ac WLAN</li> <li>Medical grade power supply (IEC 60601-1)</li> </ul>
<b>TC52x-HC</b>			
	<ul style="list-style-type: none"> <li>Specimen collection and tracking</li> <li>Electronic patient record access</li> <li>Staff communication</li> <li>Medication administration</li> <li>Alert management</li> <li>Inventory management</li> <li>Voice calls through PBX</li> <li>Secure text messaging</li> </ul>	<ul style="list-style-type: none"> <li>Durable device built for healthcare, with Android's unmatched ease of use, combined with superior clinical collaboration, data capture and device management tools</li> <li>Sanitizable device built for round-the-clock use</li> <li>SE4720 imager with white illumination LEDs and green aimer</li> </ul>	<ul style="list-style-type: none"> <li>IP65 sealing</li> <li>5" full high definition touch screen</li> <li>Integrated NFC for easy pairing</li> <li>Front and rear facing camera</li> <li>Integrated 1D/2D scan engine</li> <li>4 ft./1.2 m drop spec</li> <li>Advanced medical grade plastics able to withstand frequent cleanings from a wide selection of disinfectants</li> </ul>
<b>DS9908-HD</b>			
	<ul style="list-style-type: none"> <li>Blood verification/ phlebotomy</li> <li>Blood, tissue and specimen tracking</li> <li>Chain of custody</li> </ul>	<ul style="list-style-type: none"> <li>Premium hybrid form factor (handheld/hands-free)</li> <li>Purpose-built for laboratories</li> <li>1D and 2D barcode scanner</li> </ul>	<ul style="list-style-type: none"> <li>Corded</li> <li>RFID option</li> <li>Illumination: White</li> <li>Aimer: Green</li> </ul>
<b>DS8100-HC</b>			
	<ul style="list-style-type: none"> <li>Blood, tissue and specimen tracking</li> <li>Chain of custody</li> </ul>	<ul style="list-style-type: none"> <li>Premium healthcare scanner</li> <li>1D and 2D barcode scanner</li> <li>Plastic that reduces the spread of infection</li> </ul>	<ul style="list-style-type: none"> <li>Cordless and corded options</li> <li>Purpose-built housing</li> <li>Night mode</li> <li>Lamp mode</li> <li>PowerPrecision+ battery or a PowerCap™ capacitor</li> <li>Battery charge gauge</li> <li>Illumination: White</li> <li>Aimer: Green</li> </ul>
<b>DS4608-HC</b>			
	<ul style="list-style-type: none"> <li>Specimen track and trace</li> </ul>	<ul style="list-style-type: none"> <li>1D and 2D barcode scanner</li> <li>Plastic that reduces the spread of infection</li> </ul>	<ul style="list-style-type: none"> <li>Corded</li> <li>Night mode</li> <li>Illumination: White</li> <li>Aimer: Green</li> </ul>






# Pharmacy

Product	Application	Description	Key Technical Features
TC52x-HC			
	<ul style="list-style-type: none"> <li>Specimen collection and tracking</li> <li>Electronic patient record access</li> <li>Staff communication</li> <li>Medication administration</li> <li>Alert management</li> <li>Inventory management</li> <li>Voice calls through PBX</li> <li>Secure text messaging</li> </ul>	<ul style="list-style-type: none"> <li>Durable device built for healthcare, with Android's unmatched ease of use, combined with superior clinical collaboration, data capture and device management tools</li> <li>Sanitizable device built for round-the-clock use</li> <li>SE4720 imager with white illumination LEDs and green aimer</li> </ul>	<ul style="list-style-type: none"> <li>IP65 sealing</li> <li>5" full high definition touch screen</li> <li>Integrated NFC for easy pairing</li> <li>Front and rear facing camera</li> <li>Integrated 1D/2D scan engine</li> <li>4 ft./1.2 m drop spec</li> <li>Advanced medical grade plastics able to withstand frequent cleanings from a wide selection of disinfectants</li> <li>Integrated NFC for easy pairing</li> </ul>
TC52-HC			
	<ul style="list-style-type: none"> <li>Electronic patient record access</li> <li>Prescription verification</li> <li>Voice calls through PBX</li> <li>Secure text messaging</li> </ul>	<ul style="list-style-type: none"> <li>Durable device built for healthcare, with Android's unmatched ease of use, combined with superior clinical collaboration, data capture and device management tools</li> <li>Sanitizable device built for round-the-clock use</li> <li>SE4710 imager with red illumination/amber aimer</li> </ul>	<ul style="list-style-type: none"> <li>IP65 sealing</li> <li>5" full high definition touch screen</li> <li>Front and rear facing camera</li> <li>1D/2D scanning</li> <li>4 ft./1.2 m drop spec</li> <li>Advanced medical grade plastics able to withstand frequent cleanings from a wide selection of disinfectants</li> <li>Integrated NFC for easy pairing</li> </ul>
ZT230			
	<ul style="list-style-type: none"> <li>Pharmacy labeling</li> </ul>	<ul style="list-style-type: none"> <li>Intuitive, effortless media loading</li> <li>High quality printing for crisp, clean text and barcodes—even on narrow media</li> <li>Reliable and durable—built for light industrial and commercial environments</li> </ul>	<ul style="list-style-type: none"> <li>Direct thermal and thermal transfer</li> <li>Up to 4-inch print width</li> <li>USB, serial and Ethernet option</li> </ul>
ZT411			
	<ul style="list-style-type: none"> <li>Pharmacy labeling</li> <li>Asset management/tagging</li> </ul>	<ul style="list-style-type: none"> <li>RFID Industrial Printers/Encoders</li> </ul>	<ul style="list-style-type: none"> <li>Direct thermal and thermal transfer options</li> <li>203, 300, or 600 dpi</li> <li>USB 2.0, Serial, Ethernet, Bluetooth 2.1, USB Host</li> </ul>
ZD421-HC			
	<ul style="list-style-type: none"> <li>Medical records labeling</li> <li>Patient ID wristbands</li> <li>Lab and specimen labels</li> <li>Blood and IV bag labels</li> <li>Asset labels</li> </ul>	<ul style="list-style-type: none"> <li>4" Label Printer</li> <li>Plastic that reduces the spread of infection</li> <li>UV-ready housing designed for clinical environments</li> <li>Thermal transfer model includes time-saving ribbon cartridge loading or traditional roll-based ribbon</li> </ul>	<ul style="list-style-type: none"> <li>Direct thermal and thermal transfer options</li> <li>203 and 300 dpi</li> <li>USB, USB Host, Bluetooth Low Energy, Ethernet, dual wireless option; Mifi certified Bluetooth 4.1 and Wi-Fi certified 802.11ac WLAN</li> <li>Medical grade power supply (IEC 60601-1)</li> </ul>
ZD621-HC			
	<ul style="list-style-type: none"> <li>Medical records labeling</li> <li>Patient ID wristbands</li> <li>Lab and specimen labels</li> <li>Blood and IV bag labels</li> <li>Asset labels</li> </ul>	<ul style="list-style-type: none"> <li>4" Label Printer</li> <li>Plastic that reduces the spread of infection</li> <li>UV-ready housing designed for clinical environments</li> <li>Thermal transfer model includes time-saving ribbon cartridge loading or traditional roll-based ribbon</li> </ul>	<ul style="list-style-type: none"> <li>Direct thermal and thermal transfer options</li> <li>203 and 300 dpi</li> <li>4.3-inch, full-color LCD touch display with intuitive menu</li> <li>USB, USB Host, Bluetooth Low Energy, Ethernet, dual wireless option; Mifi certified Bluetooth 4.1 and Wi-Fi certified 802.11ac WLAN</li> <li>Medical grade power supply (IEC 60601-1)</li> </ul>





## Pharmacy (cont.)

Product	Application	Description	Key Technical Features
DS9900-HD			
	<ul style="list-style-type: none"> <li>Inventory and medication tracking</li> </ul>	<ul style="list-style-type: none"> <li>Premium hybrid form factor (handheld/hands-free)</li> <li>1D and 2D barcode scanner</li> </ul>	<ul style="list-style-type: none"> <li>Corded</li> <li>RFID option</li> <li>Illumination: White</li> <li>Aimer: Green</li> <li>Optional Driver's License Parsing (NA only)</li> </ul>
DS8100-HC			
	<ul style="list-style-type: none"> <li>Inventory and medication tracking</li> </ul>	<ul style="list-style-type: none"> <li>Premium healthcare scanner</li> <li>1D and 2D barcode scanner</li> <li>Plastic that reduces the spread of infection</li> </ul>	<ul style="list-style-type: none"> <li>Cordless and corded options</li> <li>Purpose-built housing</li> <li>Night mode</li> <li>Lamp mode</li> <li>PowerPrecision+ battery or a PowerCap™ capacitor</li> <li>Battery charge gauge</li> <li>Illumination: White</li> <li>Aimer: Green</li> </ul>
DS4608-HC			
	<ul style="list-style-type: none"> <li>Inventory and medication tracking</li> </ul>	<ul style="list-style-type: none"> <li>1D and 2D barcode scanner</li> <li>Plastic that reduces the spread of infection</li> </ul>	<ul style="list-style-type: none"> <li>Corded</li> <li>Night mode</li> <li>Illumination: White</li> <li>Aimer: Green</li> </ul>



## Non-Clinical Services

### Porter, Cleaning, Maintenance and Asset Management

#### TC52x-HC / TC52-HC

- Mobile computer for asset tracking



#### TC21-HC / TC26-HC

- Mobile computer for medical administration



#### DS8100-HC

- Premium healthcare scanner



### Find What You Seek in RFID Solutions

#### RFD8500 Sled



#### DS9900R



#### ZD621-HC



#### ZQ630 RFID



#### ZT411 RFID



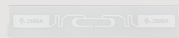
#### AN710 RFID Antenna



#### FX7500 RFID Reader



#### ZBR2000 RFID Inlay



#### ZBR4000 RFID Inlay



Premier  
**Solution Partner**  
Advanced Healthcare Specialist

ZEBRA and the stylized Zebra head are trademarks of Zebra Technologies Corp., registered in many jurisdictions worldwide. Android is a trademark of Google LLC. The Bluetooth® word mark and logos are registered trademarks owned by Bluetooth SIG, Inc. and any use of such marks by Zebra is under license. Wi-Fi™ is a trademark of Wi-Fi Alliance®. All other trademarks are the property of their respective owners. ©2021 Zebra Technologies Corp. and/or its affiliates.